



Aim High Tumbling Times

February 2012

A Message from Miss Amy...

What a fantastic start to the New Year! January at Aim High was a blast! We started off having Sean Golden and Russell Warfield as clinicians working with some of our competitive girls. They were an inspiration and both helped our girls go for the gold!. Then we wrapped up the month with our Girls Rising Star Program and their Winter Fun Meet! New this year is our Recreational Team Program. To see these girls at their first home meet was inspiring to see how all their hard work has really paid off. All our girls showed off their skills and each one of them was a STAR! It was so impressive to see the amazing skill level of these girls and their smiles as they were awarded their trophies.

I would like to thank all of the Aim High Staff who have given their time and support towards all of these wonderful events. It is a joy to work with all of you; thank-you!!

I look forward to all the fun activities in February; skill clinics, open gyms, specialty camps, and please do not forget.....SCHOOLS OUT VACATION CAMPS!! Ask any of our Aim High Staff about these events or stop by our front office.

Happy Valentine's Day

Amy

School's Out Vacation Camp

Activities will include:

- Gymnastics
- Arts & Crafts
- Obstacle Courses
- Games

What to bring:

- 2 snacks
- 2 drinks
- water bottle
- *no peanut products

We have lots of options for any time that you need!

Ages 3 – 12

½ day morning (9am-12pm) or afternoon (12pm-3pm)

Full day (9am-3pm)

****New Extended Day Hours****

Mornings 7:30-8:30pm Monday—Friday

Afternoons 3:00-5:30pm Monday-Thursday

Pricing:

Half Day

1 day (\$40); 2 days (\$65); 3 days (\$90); 4 days (\$115); 5 days (\$140)

Full Day

1 day (\$65); 2 days (\$115); 3 days (\$155); 4 days (\$170); 5 days (\$185)

From the Front Desk:

February 13th: 5th installment due for gymnastics classes.

This current installment ends on Saturday, February 25th, 2012.

February 20th - 25th: NO DANCE CLASSES OR EARLY LEARNING CENTER

Gymnastics classes will run as scheduled and don't forget our SCHOOL'S OUT VACATION CAMP (see above)

Aim High Early Learning Center

Conceive ★ Believe ★ Achieve

Classes for Ages 2 to 5!

Now Enrolling for 2012-2013



Why Aim High?

- Nurturing and Experienced Staff
- Great Staff to Child Ratio
- Gymnastics is a part of our curriculum
- Transportation offered for Kindergarten Enrichment
- D.C.Y.F. licensed

Our Programs

- Stargazers - Toddler Gym & Learn Class
- Galaxy Kids Kindergarten Enrichment
 - Full & $\frac{1}{2}$ Day Preschool and Pre-K
 - New Expanded Hour Options

Girls Competitive News By Cheri Jackson

Florida has come and gone and the girls all had a wonderful time in sunny Orlando. The Aim High team did an amazing job. All of the compulsory girls had their best team meets of the season with very few mistakes. The coaches were very proud of how they represented their club and how great they competed. I would also like to congratulate the level 9 team for their outstanding performance against some of the best clubs on the East Coast. They came in second as a team and won all around medals and events. It was so nice to see our girls and the Aim High name on the Jumbo tron outside of the Disney Wide World of Sports Complex. Nice work ladies! We know how awesome you are and you keep proving it.

The kids did a great job at the Judges Cup Invite in Newport. All of the compulsory girls were amazing and the prep optional girls really did a great job. Now we are off to the Team Challenge in Ct. followed by the Chicago Style Invitational in Chicago.

Play-Based Preschool By Sue Cole

A common question that we often hear is; "What is the philosophy and curriculum of the Aim High Early Learning Center." We are a play-based program. We believe children learn best through free play and experimentation. Our curriculum emphasizes on activities that encourage social development. This means we offer the opportunities for children to share, master self-help skills, and work on conflict resolution. The Early Learning Center also stresses core motor and pre-literacy skills.

We break down the activities in the day into a combination of both teacher directed and child created ones. Children learn to work in a community to share the toys along with understanding there are times when a teacher gives instruc-

tion. These are skills that children will need throughout their educational career. Aim High introduces children to their ABCs, 123s, and similar kindergarten-prep topics but we do this through games and stories. Otherwise, we trick them into learning! Yes, children think they are only playing, but really they are learning skills that will help to prepare them for the academic world ahead of them.

Parents will notice that our materials offer open-ended, imaginative play. Our tools include blocks, books, puzzles, art supplies, sand, play dough, water, costumes, a kitchen with pretend food and more. We also rotate the toys in and out of the classroom to help kids stay engaged. All children are individual learners, who need to be encouraged in their own unique

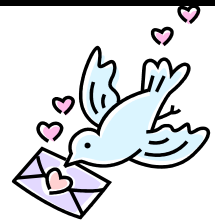
way. There is no such thing as a cookie cutter curriculum, because what works for one child or group may not work the same way with the next. Therefore our curriculum is dynamic, and constantly changing to fit the unique interests of each new group of children we encounter each year.

Aim High Early Learning Center is a school that is kid-friendly, with plenty of natural light and a warm atmosphere. We love to get down on the floor and play with children and are understanding of the parents' needs. After all, we are parents ourselves with a little bit of an inner child in each one of us!



ELC Tattler February 2012

Laying the foundation for Future Learning



Friendly Reminders

To all Families, we are asking that everyone keep the speed down in the parking lot remembering that Aim High has many children entering and exiting our facility.

Also, at drop off and pick up, children are required to be accompanied by an adult to and from their cars. We cannot allow a child to run to their car unattended.



Stargazers

Wow, what a difference a few months makes. Our little ones are doing a great job learning to share and play nicely together. We are still working on staying in line and following directions in the gym. This one is tough due to the distractions in such a large area. We'll keep working on it.
Miss Susan & Miss Missy



Preschool & Pre-Kindergarten

Friendship and community are the focus themes for February. With the arrival of Valentine's Day, we are inviting the students to bring in Valentines to share with everyone in their class. Due to allergies we are asking that no candy or food items be brought in. Stickers and pencils are great substitutes. Valentine cards are a great way to practice name writing.

The Pre-K will be celebrating their 100th day of school. Keep an eye out for more information. The Pre-K will be focusing on the letters W, H, & A. For Pre-school the letters this month will be M & N. Both classes will be reviewing patterning and the number 6.
Happy February!
Miss Dori, Miss Jacqui, & Miss Tara

Now Enrolling

We have begun our enrollment process for the 2012 – 2013 school year. Applications will be accepted on a first-come first-serve basis. Open enrollment begins February 1st.

Our best advertising is from all of you. Please pass the word that our wonderful program is here and perspective new friends can call and set up a tour at any time.



Galaxy Kids

The big kids are doing well. Everyone has settled into their schedules and is enjoying our variety of themes. Just a quick note- it would be great for them to have refillable water bottles if at all possible. Thank you.

Miss Amy, Miss Dori, & Miss Erin

Dates to Remember

- 7th- E. Greenwich & Warwick Outreach Screening**
- 14th- Valentine's Day & 100 Day Party for Pre-K
- 15th & 16th- N. Kingstown Outreach Screening**
- 20th – 24th ELC Closed for Winter School Break

**More information to follow



Valentine's Day Reminder:

Please no edible treats as valentines. Just cards are great. If you feel the need to do more pencils & erasers are fine.

February 2012

Sun Mon Tue Wed Thu Fri Sat

Don't forget our Skill Clinics ... every Friday! LSG 9:15-10am & RS 4-5pm		1 Summer Camp Enrollment begins today	2	3 Homeschooling Open Gym 9:30-11:30am	4
5	6	7 Homeschooling Open Gym 12:30-2:30am	8	9	10 LSG Open Gym 9:30-11:30am Rising Star Open Gym 6:30-8:30pm
12	13	14	15	16	17 Enchanted Kingdom 10-1 pm FKN 6-8:30
← Fifth Gymnastics Installments Due →					
19	20	21	22	23	24 LSG Open Gym 9:30- 11:30am Rising Star Open Gym 6:30-8:30pm
Schools Out Vacation Camps Monday thru Friday 9am—3pm No Dance or Early Learning Center Classes—Sign Up for Vacation Camp!					25
26	27	28	29	Now accepting enrollments for our Early Learning Center 2012-2013 school year Programs for 2, 3, 4 & 5 year olds!	

February Special Events

Schools Out Vacation Camp

Ages 3-12 years
February 20-24th
9:00am-3:00pm
extended hours available

Rising Stars Open Gym

Ages 5 and up
Tuesday February 21st
12:30pm—2:30pm

Specialty Camp

Ages 3-5 years
Friday, February 17th
10:00am—1:00pm